

ORGANISATIONAL SYSTEM FOR SPECIFIC PRODUCTS MMSlog®

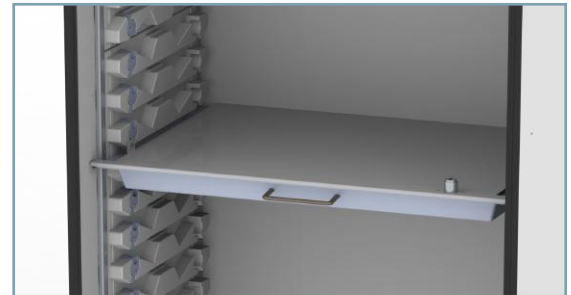
The **COVER FOR OPIATES MMSlog®** for use on modules with 600*400 mm normalised dimensions according to ISO 3394, is fixed at the rear inside the modular cabinet, and is fitted with a pressure lock with key, ensuring the locking and removal of the 600*400 mm module located below the cover for opiates. Manufactured in folded steel plate with epoxy coating, the cover has a pressure lock with key at the front for opening and closing.

The **CATHETER SUPPORT MMSlog®** for hanging catheters, located inside the modular cabinet and modular shelving makes it possible to implement the stock and Kanban order management system and/or "double hook/double drawer." It is made in epoxy coated profiles and steel rod. The support with hooks is fixed on a collapsible extension guide that ensures convenient access to the product. This guide is also fixed below an HPL shelf size 600*400 mm that is located inside the cabinet and/or modular shelving. The catheter support is available in 2 models, depending on the cabinet width or modular shelving used,

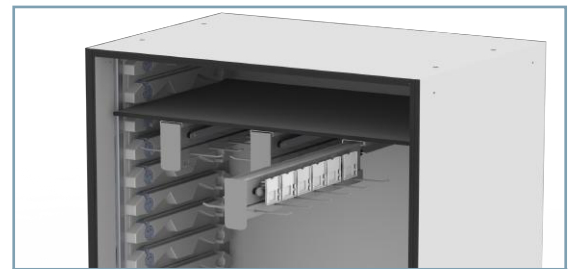
AK660040036 - Equipped with a *HPL 600*400*10 mm shelf with 2 removable 600 mm long bottom collapsible rails and 9*2 hooks each *rail (36 hooks total).

AK640060036 - Equipped with a *HPL 600*400*10 mm shelf with 3 removable 400 mm long bottom collapsible rails and 6*2 hooks each *rail (36 hooks in total).

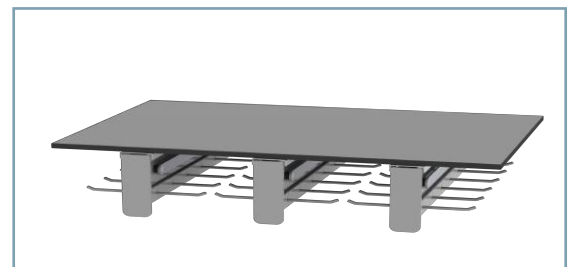
The **SUPPORT FOR ENDOSCOPES MMSlog®** can store up to 6 flexible endoscopes. Manufactured with a 600*400*10 mm HPL sheet, and support points milled on the shelf, which is located inside the modular cabinet/trolley and has a standardised size of 600*400 mm according to ISO 3394.



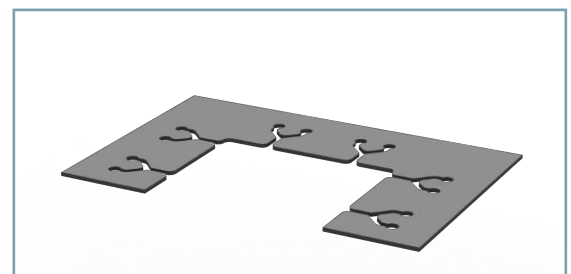
1. Cover for Opiates in Modular Cabinet



2. Catheter Support in Modular Cabinet



3. Catheter Support 3 Guides/36 Hooks



4. Endoscope support 600*400 mm